



## Scottoil: CCM R35 & FT35

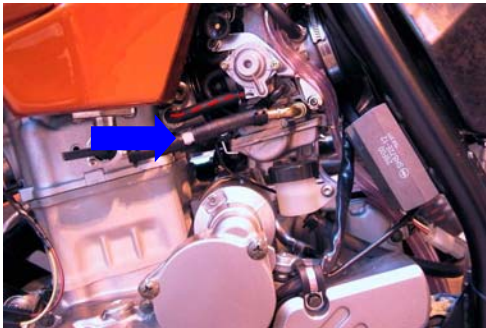
### Installation Guide for CCM R35 & FT35



Locate the vacuum – there is a vacuum pipe from the LHS of the inlet manifold, as indicated below left.

Cut into this pipe and insert the T-Piece from the Scottoil kit.

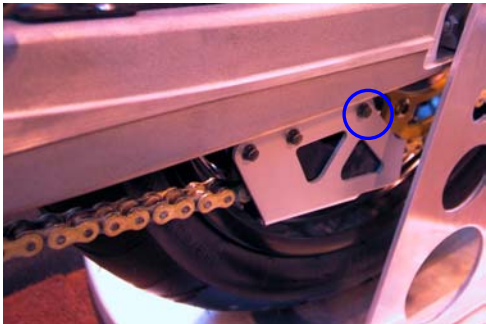
Then press the Damper Elbow, part number 4 onto the third leg of the tee.



The RMV can be mounted under the seat.

The more vertical the RMV the better and remember to avoid exhaust and engine components.

For further information, see our easy step installation guide – '**RMV Positions, General**'.



The Dispenser Assembly should be mounted to the swinging arm, at the point shown left, using the Dispenser Mounting Plates (parts 19 & 27) coupled together using a Single Sided Swingarm Adapter, available Free of Charge from Scottoil.

The nib of the dispenser should feed the sprocket between the 6 & 7 o'clock positions on the sprocket, the cut face facing outwards, as shown bottom left.



Once fitted, fill and prime the system and set the adjuster knob to 'prime'.

Start the engine and turn the adjuster knob until a flow of between 1 and 2 drops per minute is achieved.

Check the condition of your chain after a ride, and then adjust as required.

Note: This is a generic image

If you have any further comments or queries, and are unable to resolve them using our website, please do not hesitate to call technical on 0141 955 1100 or email [technical@scottoiler.com](mailto:technical@scottoiler.com) for assistance. Thank you.

Scottoil Ltd. 2 Riverside, Milngavie, Glasgow, G62 6PL Tel. 0141 955 1100 Fax. 0141 956 5896 [www.scottoiler.com](http://www.scottoiler.com)

