



Scottoil: Honda CB 1300 Fi

Installation Guide for the Honda CB 1300 Fuel Injected

Note: This install requires a Single Sided Swingarm adapter, available free of charge from Scottoil. The HCR (sold separately) is not compatible with this model, we recommend the Lube Tube instead.



Locate the vacuum – There are 4 vacuum pipes which join to become one. Cut into one of these pipes, as shown below left, and insert the T-Piece from the Scottoil kit. Then press the Damper Elbow, part number 4, onto the third leg of the tee.

The RMV can be positioned under the seat, as shown in the third picture.

The more vertical the RMV the better and remember to avoid exhaust and engine components.

For further information, see our easy step installation guide – '**RMV Positions, General**'



The Dispenser Assembly is mounted to the swinging arm using the Dispenser Mounting Plates (parts 19 & 27) coupled together using a Single Sided Swingarm Adapter, available Free of Charge from Scottoil, as shown bottom left.

The nib of the dispenser should feed the sprocket between the 6 & 7 o'clock positions on the sprocket, the cut face facing outwards.

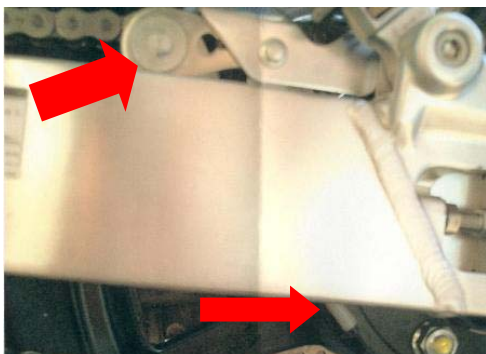


Once fitted, fill and prime the system and set the Adjuster Knob to 'prime'.

Start the engine and turn the adjuster knob until a flow of between 1 and 2 drops per minute is achieved.

Check the condition of your chain after a ride, and then adjust as required.

The Dual Injector (sold separately) is shown below.



If you have any further comments or queries, and are unable to resolve them using our website, please do not hesitate to call technical on 0141 955 1100 or email technical@scottoiler.com for assistance. Thank you.

Scottoil Ltd. 2 Riverside, Milngavie, Glasgow, G62 6PL Tel. 0141 955 1100 Fax. 0141 956 5896 www.scottoiler.com

